

LANDS Superabrasives

ENCAP SERIES - PELLETS

“Better Drilling Performance”

LANDS Superabrasives has developed after years of experience in the superabrasives industry and together with its partners in the drilling industry an encapsulated synthetic diamond or LANDS Pellets.

The metal bond material is engineered around the diamond particle to the extent that it is completely enveloped by bond powder to produce a sintered segment.

The encapsulation technology developed by LANDS Superabrasives provides custom made pellets according to the customer requirements in order to achieve a homogenous distribution of synthetic diamond in the tool segment.

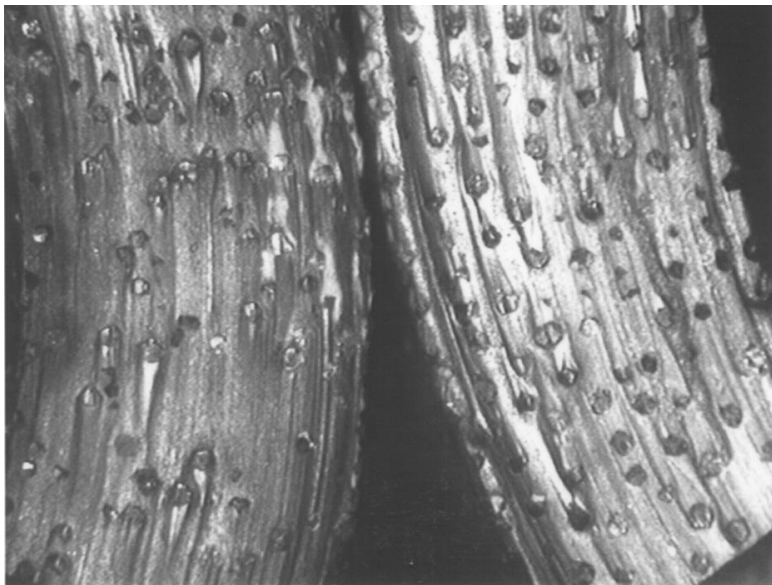
Main Advantages

Even distribution of grits in the diamond tool

Longer life of diamond grits

Lesser pull out of diamond grits

Longer tool life and cutting rate



segment without pellets

segment with pellets



cimex 

LANDS Superabrasives

ENCAP SERIES - PELLETS

Key Customer Benefits

Customized pellets according to the customer requirements

Increased productivity gains when using volumetric filling

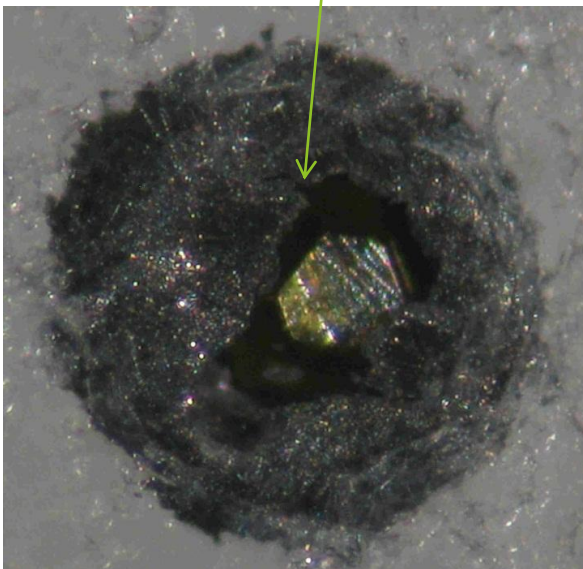
Safer work environment by cancelling handling of hazardous metal powder handling

Lower scraps ratio (easier infiltration)

Increased life of the mould (no wear by diamond grits)

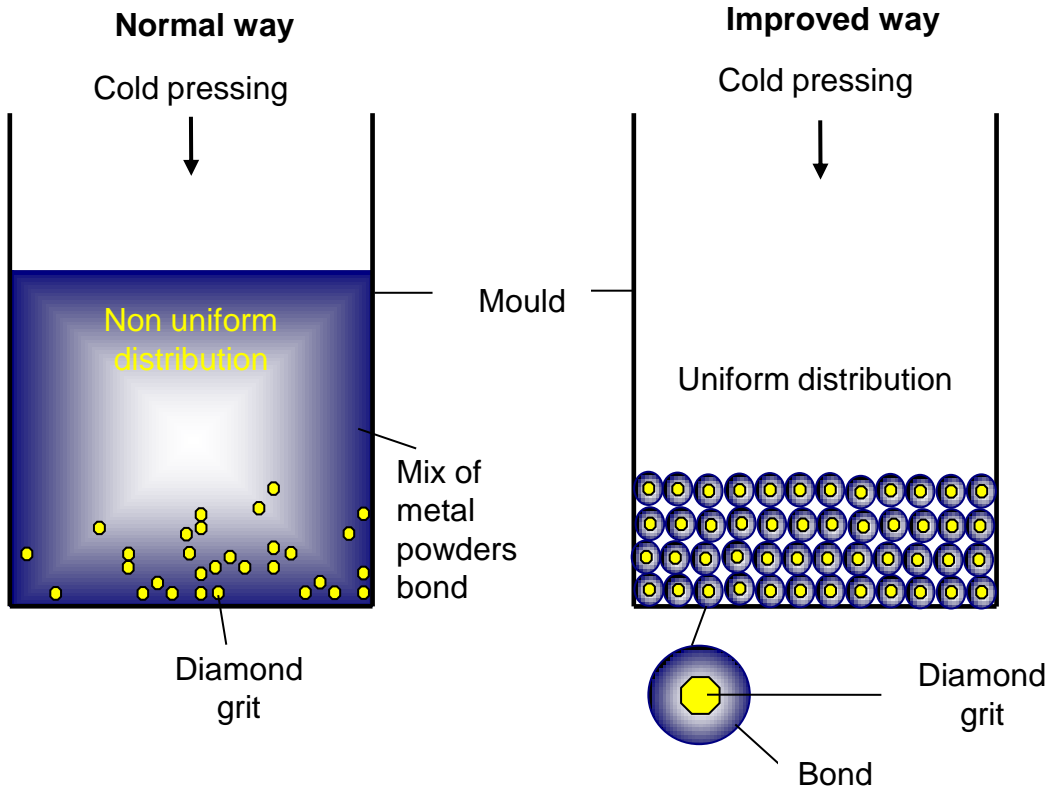


Encrusted Diamond Pellet EDP



LANDS Superabrasives

ENCAP SERIES - PELLETS



LANDS Superabrasives manufactures every pellet custom made to your bond preference, diamond grade preference, concentration choice. Our pellets are binder free and can directly be pressed and infiltrated.

Encapsulation ensures an even and uniform distribution of diamond Particles without costly placement of machines.

Pelletization process depends on your infiltration technique and parameters, so collaboration is necessary for fine-tuning.

For more information, please contact your local
LANDS Superabrasives dealer

LANDS
SUPERABRASIVES

cimex 